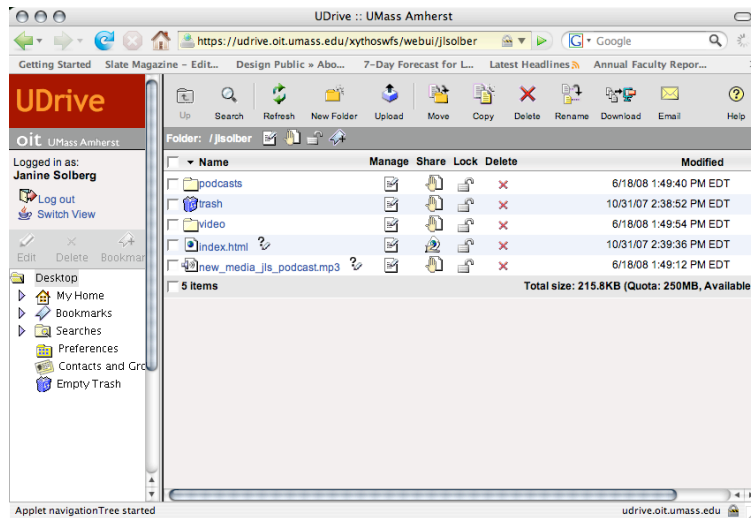
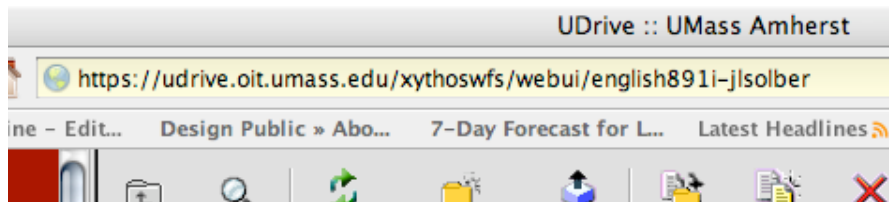


## Logging in to the 891 UDrive space

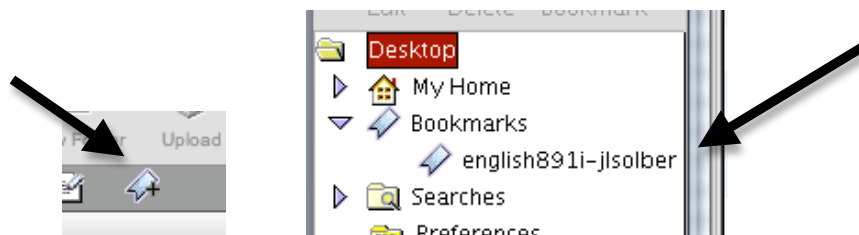
1. Log in to UDrive at <https://udrive.oit.umass.edu/xythoswfs/>. Your UDrive view appears:



2. Paste the following link into the address bar of your browser:  
<https://udrive.oit.umass.edu/xythoswfs/webui/english891i-jlsolber>



3. Press Return/Enter. The view will change to show our course content (folders, files).
4. Click the "bookmark" icon to bookmark our course link (so that you can find it easily in the future). A link will now appear in the left-hand menu area whenever you log in to your UDrive.



5. To return to your home UDrive view, click the "My Home" link. If you've never used UDrive before, this area will be empty (unless or until you put stuff there). To create new folders, click the folder icon on the top menu bar. Use the "upload" icon to upload files to your space. More info at: [http://www.oit.umass.edu/udrive/get\\_started/about.html](http://www.oit.umass.edu/udrive/get_started/about.html)