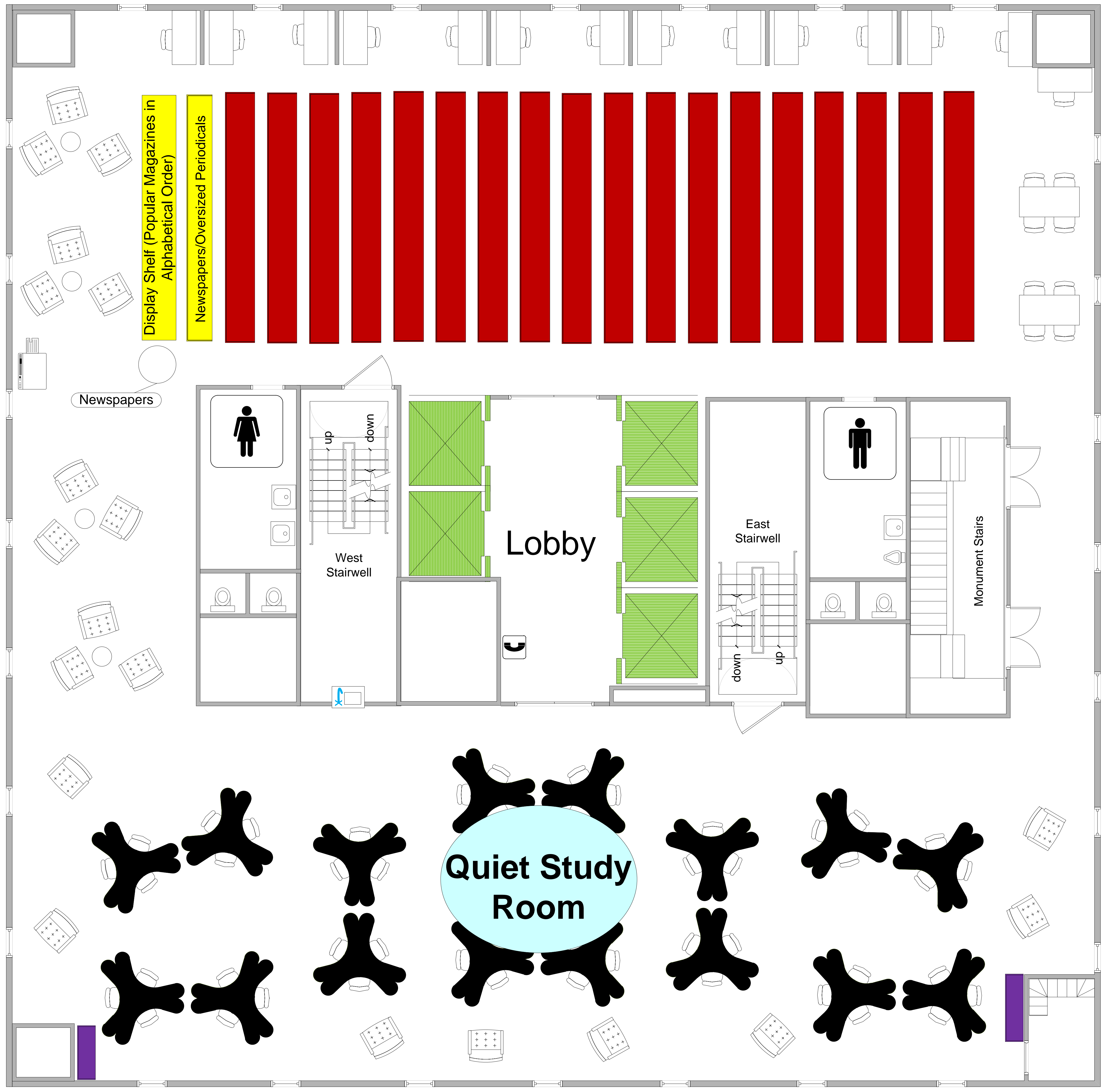






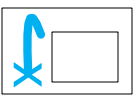
# W.E.B. Du Bois Library

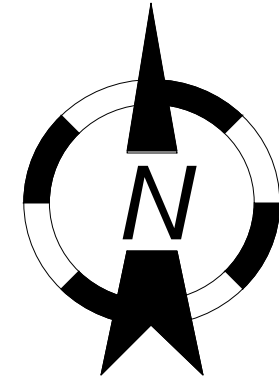
## 5th FLOOR

### CALL # K (non-circulating)



#### Legend

-  = Oversize Books
-  = Book Stacks
-  = Lockers
-  = On Campus Phone (Free)
-  = Water Fountain



For Assistance, consult Barbara Morgan at the  
Reference and Research Assistance Desk  
on the Main Floor.

More detailed map to assist patrons  
can be found on the 5<sup>th</sup> Floor.

\*Not to Scale  
Furniture Orientation is Approximate